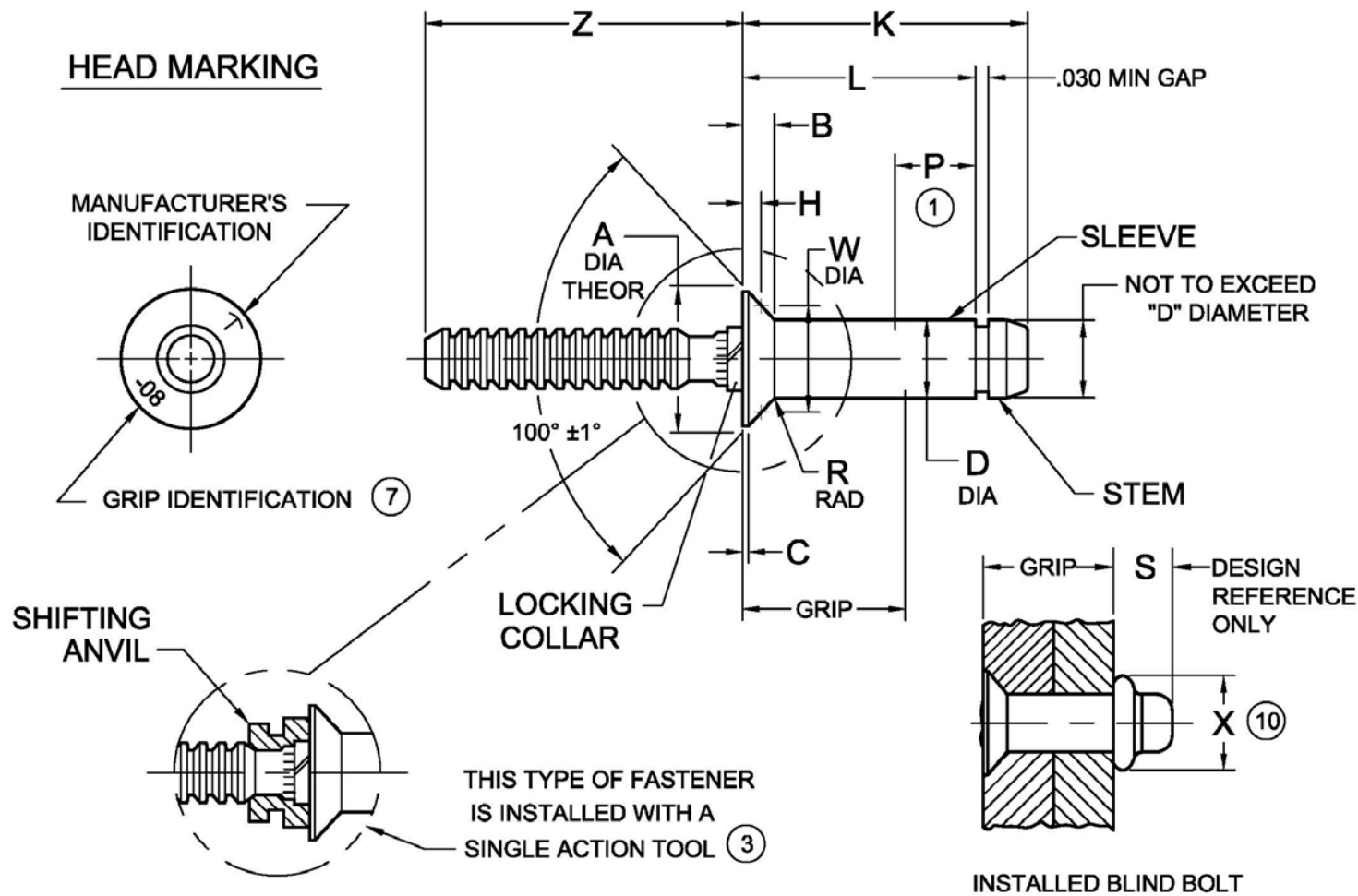




PRINTED COPIES OF THIS DOCUMENT ARE FOR "REFERENCE" ONLY. CURRENT REVISIONS ARE AVAILABLE ONLINE.



DIA DASH NO.		A	B	C	D	H	P	R	S	W	X	Z	HOLE LIMITS	INSTALLED STRENGTH	
Double Action	Single Action	MAX	MAX	MAX	±.001		MAX	MAX	MAX	GAGE	MIN	MIN		Single Shear Minimum (LBS)	Tensile Minimum (LBS)
-05	S05	.333	.072	.011	.163	.0206 .0171	.215	.010	.202	.2832 .2830	.195	.844	.167 .164	2340	1350
-06	S06	.386	.080	.013	.198	.0243 .0205	.250	.015	.231	.3272 .3270	.238	.875	.202 .199	3450	2100
---	-08	.507	.105	.017	.259	.0310 .0270	.305	.020	.279	.4320 .4318	.315	1.000	.263 .260	5900	3650
---	-10	.634	.137	.020	.311	.0367 .0325	.350	.025	.319	.5451 .5449	.373	1.218	.315 .312	8500	5200
---	-12	.762	.165	.023	.373	.0428 .0380	.405	.030	.364	.6582 .6580	.448	1.562	.377 .374	12200	7500

NOTICE: ALL DIMENSIONS ARE IN INCHES AND APPLY AFTER FINISH AND BEFORE LUBRICATION UNLESS OTHERWISE SPECIFIED.

WARNING: FASTENERS MAY NOT PERFORM PROPERLY IF ALTERED FROM THE MANUFACTURER'S AS-SHIPPED CONDITION OR INSTALLED IN CONDITIONS OTHER THAN SPECIFIED HEREIN.

PROCUREMENT SPECIFICATION:

NASM81177 ⑥

NAS 523 CODE:

**CHERRY MAXIBOLT**  
ALLOY STEEL BLIND BOLT  
100° FLUSH HEAD

SHEET 1 OF 4

ISSUE

4-07-89

REV.

AG

06-20-19

PART NUMBER

**CR7310**



GRIP DASH NO.	GRIP RANGE 1/16 RANGE		-05 DIA		-06 DIA		-08 DIA		-10 DIA		-12 DIA	
	MIN	MAX	L REF	K MAX	L REF	K MAX	L REF	K MAX	L REF	K MAX	L REF	K MAX
-02	⑤	.157	.280	.434	.303	.479	---	---	---	---	---	---
-03	.156	.220	.342	.496	.365	.541	.406	.616	---	---	---	---
-04	.219	.282	.405	.559	.428	.604	.469	.678	.506	.743	.548	.820
-05	.281	.345	.467	.622	.490	.666	.531	.740	.568	.805	.610	.883
-06	.344	.407	.530	.684	.553	.729	.594	.803	.631	.868	.673	.945
-07	.406	.470	.592	.746	.615	.791	.656	.866	.693	.930	.735	1.007
-08	.469	.532	.655	.809	.678	.854	.719	.928	.756	.993	.798	1.070
-09	.531	.595	.717	.872	.740	.916	.781	.990	.818	1.055	.860	1.133
-10	.594	.657	.780	.934	.803	.979	.844	1.053	.881	1.118	.923	1.195
-11	.656	.720	.842	.996	.865	1.041	.906	1.116	.943	1.180	.985	1.257
-12	.719	.782	.905	1.059	.928	1.104	.969	1.178	1.006	1.243	1.048	1.320
-13	.781	.845	.967	1.122	.990	1.166	1.031	1.240	1.068	1.305	1.110	1.383
-14	.844	.907	1.030	1.184	1.053	1.229	1.094	1.303	1.131	1.368	1.173	1.445
-15	.906	.970	1.092	1.246	1.115	1.291	1.156	1.366	1.193	1.430	1.235	1.507
-16	.969	1.032	1.154	1.309	1.178	1.354	1.219	1.428	1.256	1.493	1.298	1.570
-17	1.031	1.095	---	---	1.240	1.416	1.281	1.490	1.318	1.555	1.360	1.633
-18	1.094	1.158	---	---	1.303	1.479	1.344	1.553	1.381	1.618	---	---
-19	1.156	1.220	---	---	1.365	1.541	1.406	1.616	---	---	---	---
-20	1.219	1.282	---	---	1.428	1.604	1.469	1.678	---	---	---	---
-21	1.282	1.345	---	---	1.491	1.667	1.532	1.741	---	---	---	---

SHEET 2 OF 4			PART NUMBER	
ISSUE	4-07-89		CR7310	
REV.	AG	06-20-19		



FINISH CODE	MATERIAL ②			FINISH		
	SLEEVE	STEM	LOCK RING	SLEEVE	STEM ⑨	LOCK RING
NONE	4037 ALLOY STEEL ASTM-A-331 OR ASTM-A-108	8740 ALLOY STEEL ASTM-A-331 OR ASTM-A-108	A-286 CRES AMS5731 OR AMS5737	CAD PLATE PER AMS-QQ-P-416 TYPE II, CLASS 2	CAD PLATE PER AMS-QQ-P-416 TYPE I, CLASS 3	PASSIVATE AMS2700
D	4037 ALLOY STEEL ASTM-A-331 OR ASTM-A-108	8740 ALLOY STEEL ASTM-A-331 OR ASTM-A-108	A-286 CRES AMS5731 OR AMS5737	IVD ALUMINUM COATING PER MIL-DTL-83488	IVD ALUMINUM COATING PER MIL-DTL-83488	PASSIVATE AMS2700
EE	4037 ALLOY STEEL ASTM-A-331 OR ASTM-A-108	8740 ALLOY STEEL ASTM-A-331 OR ASTM-A-108	A-286 CRES AMS5731 OR AMS5737	ALUMINUM COATING PER NAS4006	ALUMINUM COATING PER NAS4006	PASSIVATE AMS2700
EZ	4037 ALLOY STEEL ASTM-A-331 OR ASTM-A-108	8740 ALLOY STEEL ASTM-A-331 OR ASTM-A-108	A-286 CRES AMS5731 OR AMS5737	ZINC PLATE PER ASTM-B-633, TYPE 2	ALUMINUM COATING PER NAS4006	PASSIVATE AMS2700
Z	4037 ALLOY STEEL ASTM-A-331 OR ASTM-A-108	8740 ALLOY STEEL ASTM-A-331 OR ASTM-A-108	A-286 CRES AMS5731 OR AMS5737	ZINC PLATE PER ASTM-B-633, TYPE 2	CAD PLATE PER AMS-QQ-P-416, TYPE 1, CLASS 3	PASSIVATE AMS2700
DD	4037 ALLOY STEEL ASTM-A-331 OR ASTM-A-108	8740 ALLOY STEEL ASTM-A-331 OR ASTM-A-108	A-286 CRES AMS5731 OR AMS5737	IVD ALUMINUM COATING PER MIL-DTL-83488, CL3, TYPE 2 <b>WITH A BLUE OR GREEN DIE TO FED-STD-595</b>	IVD ALUMINUM COATING PER MIL-DTL-83488	PASSIVATE AMS2700
GEE ⑪	4037 ALLOY STEEL ASTM-A-331 OR ASTM-A-108	8740 ALLOY STEEL ASTM-A-331 OR ASTM-A-108	A-286 CRES AMS5731 OR AMS5737	ALUMINUM COATING PER NAS4006, Class NC	ALUMINUM COATING PER NAS4006, Class NC	PASSIVATE AMS2700
GEZ ⑪	4037 ALLOY STEEL ASTM-A-331 OR ASTM-A-108	8740 ALLOY STEEL ASTM-A-331 OR ASTM-A-108	A-286 CRES AMS5731 OR AMS5737	ZINC PLATE PER ASTM-B-633, TYPE 2	ALUMINUM COATING PER NAS4006, Class NC	PASSIVATE AMS2700
GD ⑪	4037 ALLOY STEEL ASTM-A-331 OR ASTM-A-108	8740 ALLOY STEEL ASTM-A-331 OR ASTM-A-108	A-286 CRES AMS5731 OR AMS5737	IVD ALUMINUM COATING PER MIL-DTL-83488, CL 3, TYPE II (SUPPLEMENTAL: MIL-DTL-5541, CL 1A, TYPE II)	IVD ALUMINUM COATING PER MIL-DTL-83488, CL 3, TYPE II (SUPPLEMENTAL: MIL-DTL-5541, CL 1A, TYPE II)	PASSIVATE AMS2700

## NOTES:

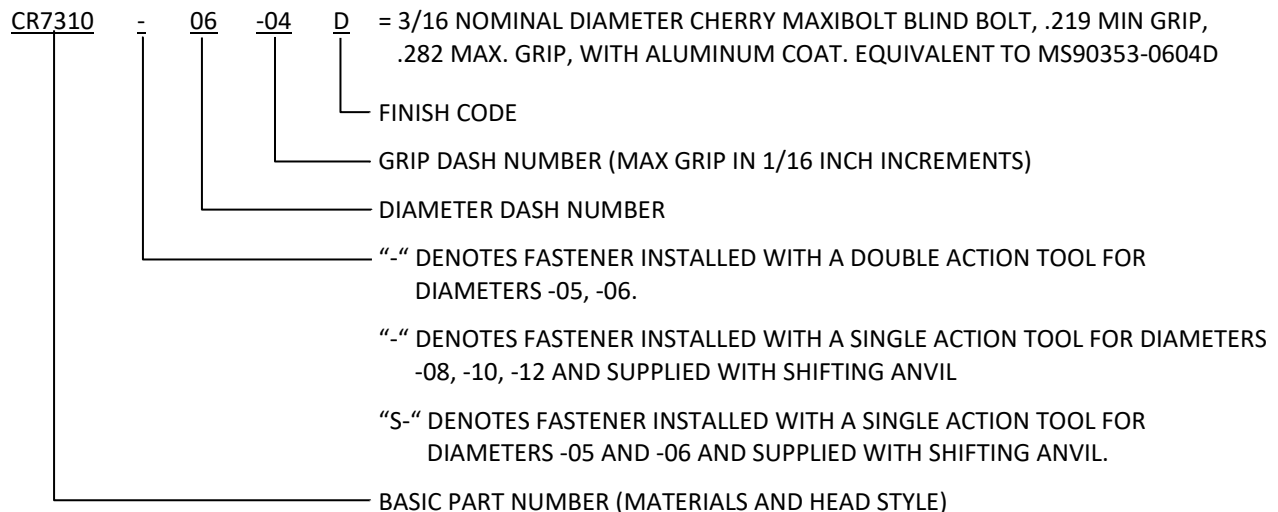
① THIS LENGTH OF "D" DIAMETER MAY BE .002 UNDERSIZE.

SHEET 3 OF 4			PART NUMBER	
ISSUE	4-07-89		<b>CR7310</b>	
REV.	AG	06-20-19		



- ② MATERIAL DESIGNATION REFERS TO CHEMICAL COMPOSITION ONLY.
- ③ -05 AND -06 DIA FASTENERS ARE INSTALLED WITH A DOUBLE ACTION (SHIFTING) TOOL; S05 DIA, S06 DIA, -08 DIA, -10 DIA AND -12 DIA FASTENERS ARE INSTALLED WITH A SINGLE ACTION (NON-SHIFTING) TOOL AND ARE SUPPLIED WITH SHIFTING ANVIL. SHIFTING ANVIL IS SOLID OR SPLIT, MFG'S OPTION.
- ④ SIZES BELOW HEAVY LINE ARE SPECIAL ORDER ONLY.
- ⑤ MINIMUM GRIP FOR -05 DIA IS .094 AND -06 DIA IS .120.
- ⑥ THIS PRODUCT MEETS THE REQUIREMENTS OF MS90353 (EXCEPT FOR ZINC PLATING AND NAS4006 ALUM COATING) FOR “-” CODE PARTS, IN THE -05, -06, -08, -10 AND -12 DIAMETER SERIES; AND FOR “S” CODE PARTS IN THE S05 AND S06 DIAMETER SERIES.
- ⑦ SINGLE DIGIT MARKING IS PERMISSIBLE, AT MANUFACTURER’S OPTION, FOR GRIP DASH (-) NUMBERS LESS THAN 10.
- 8. LUBRICATION: NONE EXCEPT MANUFACTURER’S OPTION TO LUBRICATE LOCK MECHANISM WITH LOX (LIQUID OXYGEN) COMPATIBLE DRY FILM LUBRICANT.
- ⑨ SHIFTING ANVIL OR STEM DYED GREEN FOR S05 AND S06 DIAMETERS ONLY.
- ⑩ MAXIMUM DIAMETER OF BLIND HEAD (Ø X) SHALL NOT EXCEED MAXIMUM DIAMETER OF MANUFACTURED HEAD (Ø A).
- ⑪ FINISH CODES WITH THE PREFIX “G” INDICATE REACH COMPLIANT COATING.

### EXAMPLE OF CHERRY PART NUMBER:



SHEET 4 OF 4			PART NUMBER
ISSUE	4-07-89		CR7310
REV.	AG	06-20-19	

**STANDARDS PAGE REVISION LOG      CR7310**

REV LTR	DATE	DCR NUMBER	REVISION DESCRIPTION	COMP. BY
AG	06-20-19	19-0344	• PAGE 3 – CELL FINISH CODE FOR FINISH SLEEVE, ADDED “WITH A BLUE OR”	AA